

WE TAKE OUR STRENGTH *From Nature*

“

Just as one piece in nature can change the whole, a design inspired by nature can change our whole life. Justeel always works with an innovative perspective and, with the product quality it offers its customers and its understanding of design, it carries nature's unique lines into life. Knowing that perfection comes from nature's details, it manufactures each and every part to make the whole perfect. It discovers the nature of strength and esthetics in every step it takes with the goal of being the place where quality and safety meet in stainless steel systems. Nature's unique forms have left everyone in awe from the past to the present and with Justeel they find life in the most meaningful details of living.

”

JUSTEEL®

About Us

The JUSTEEL brand was born as a result of the experience gained by the Pimeks Group since 1993 and with the functionality and esthetics it offers in its designs as the new face of stainless steel architecture, its personnel with experience in the field, and its factory equipped with the latest technologies, it offers quality, reliable, and innovative solutions. Adopting the principle of working with a focus on customer satisfaction, the Justeel team works with a high standard of service from the quality control system to the packaging and shipment of products. In its factory built on 45,000 square meters of open space and 9,000 square meters of covered floors using the latest technology CNC workbenches, welding machines, laser cutters, Abkant sheet metal bending and an experienced professional workforce, the Justeel Stainless Steel and Metal Products Industrial Trading Company makes stainless steel, glazed goods, aluminum, secondary steel industry goods and all kinds of steel products by caring about people and the environment. At the same time, through the work it carries out, it is aware of today's problems and aims to leave future generations a healthy environment by caring about sustainability and recycling through the products it uses.

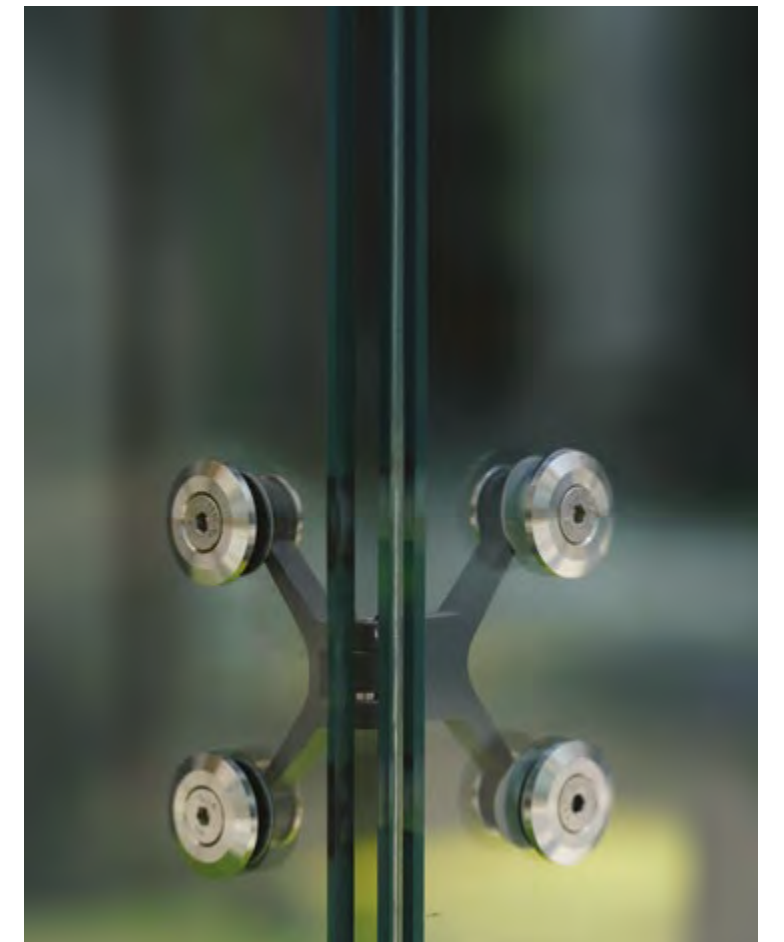
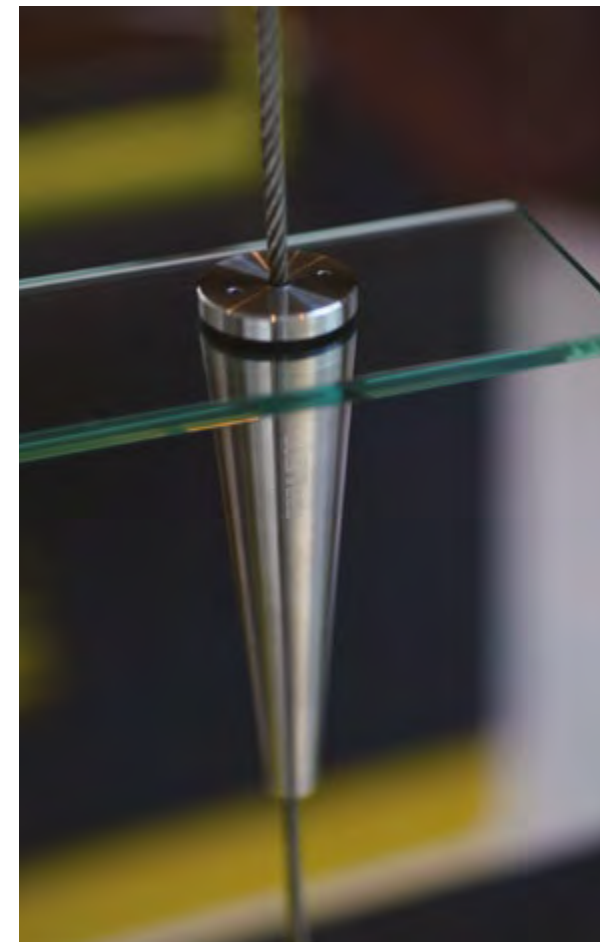


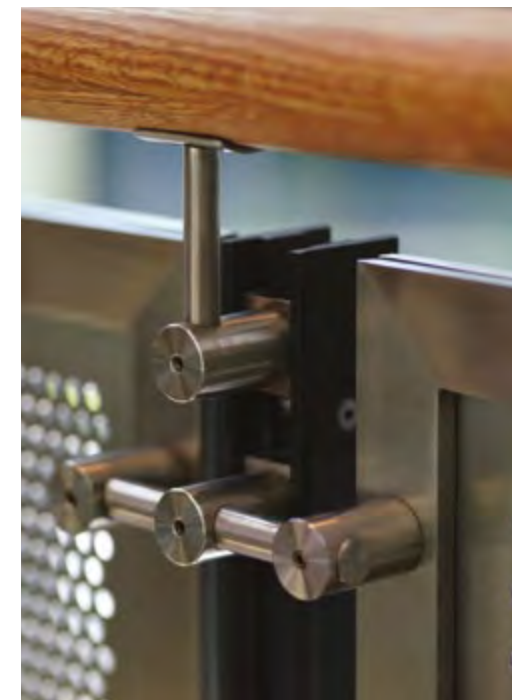
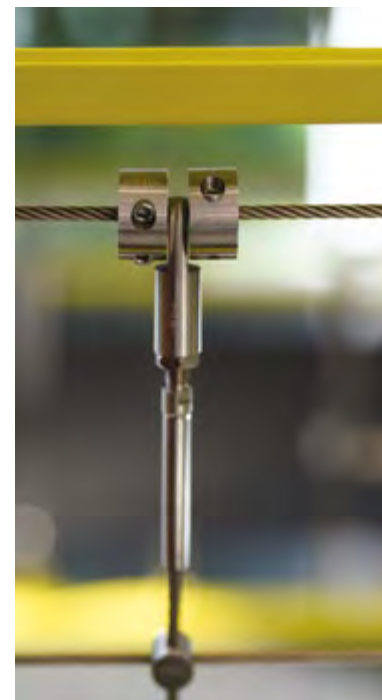
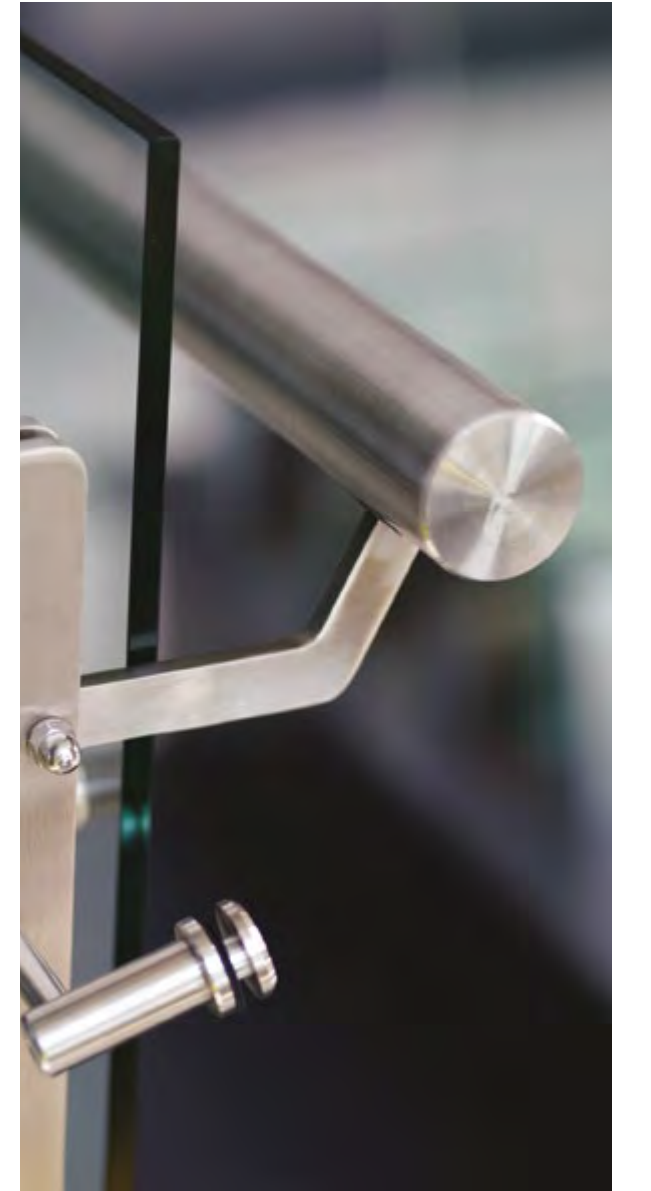


Design / R&D

In addition to the standard systems it develops to international standards to meet project requirements, Justeel's design and R&D group also offers project-specific designs and produces solutions by considering aesthetics, safety, and project economy.

The experienced Justeel design group is involved in many prestigious projects from major projects to boutique projects and provides project services in line with the expectations of the project, while the R&D pushes architectural boundaries and continues its work on being ever newer, ever better.





Manufacturing

Serving with the aim of providing the highest tier of quality in its factory covering 9,000 m², with its broad-perspective vision, Justeel is determined to make its products reach many more users on the international platform and has developed a manufacturing capacity and sales network to this end.

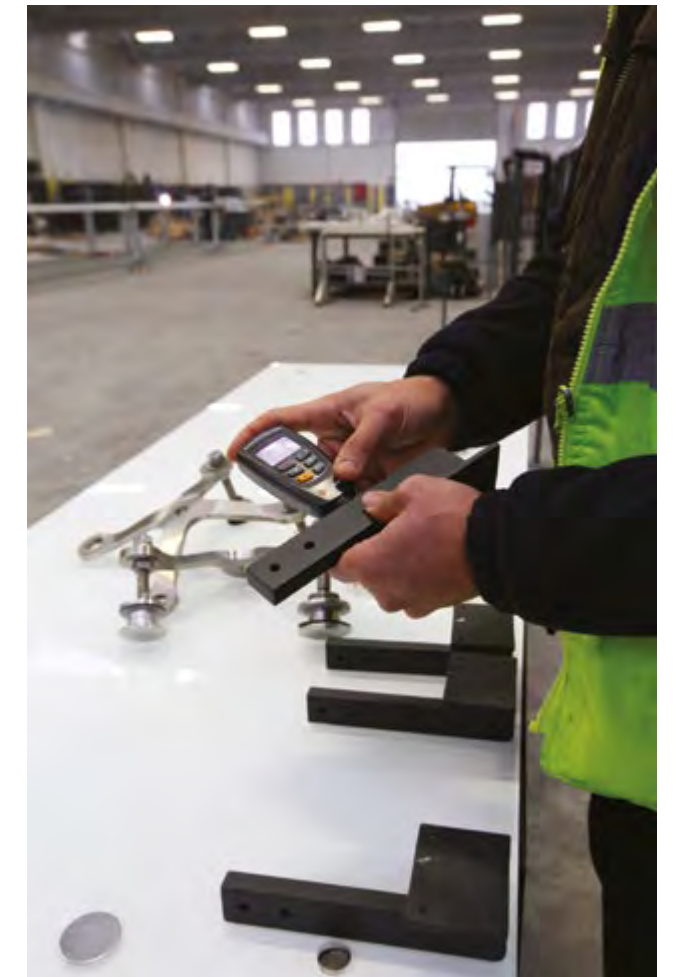
Justeel makes its products using the latest technology machinery in its European-standard factory and carries out high-quality production with its experienced and trained manufacturing staff. Justeel carries out its activities with the responsibility of being one of the leading companies in the sector and as such it is continually renewing itself with fresh investments.



Quality Control And Logistics

Justeel has brought its manufacturing quality to the highest level with its quality control system and staff. Justeel carries out systematic and meticulous work both in production and assembly to ensure that the products, which are completed and prepared with great care, are sent to all over the world in the safest way possible. Adopting the principle of working with a focus on customer satisfaction, the Justeel team works with a high standard of service from the quality control system to the packaging and shipment of the products, and makes sure that each product reaches its solution partners at the specified time.

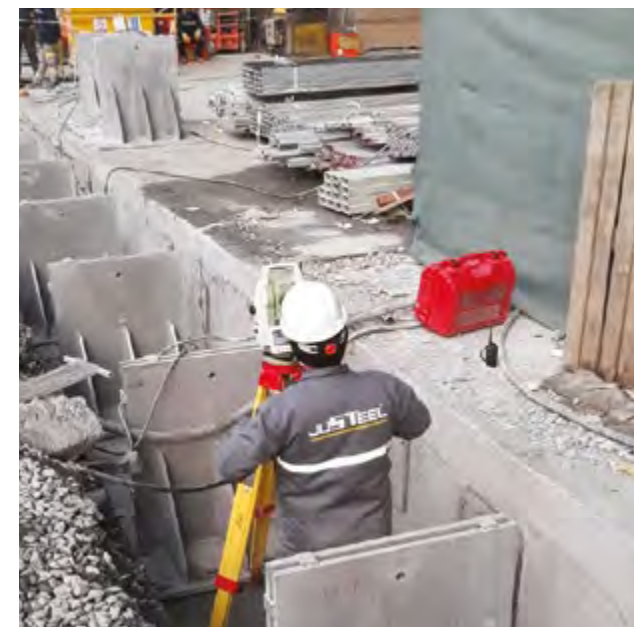
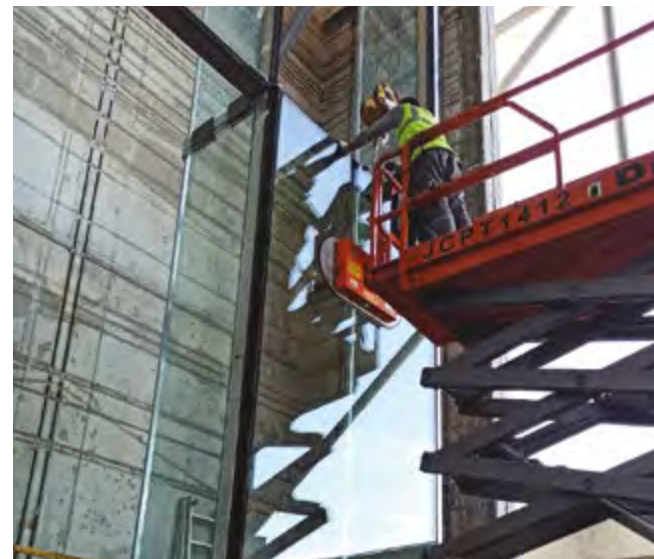
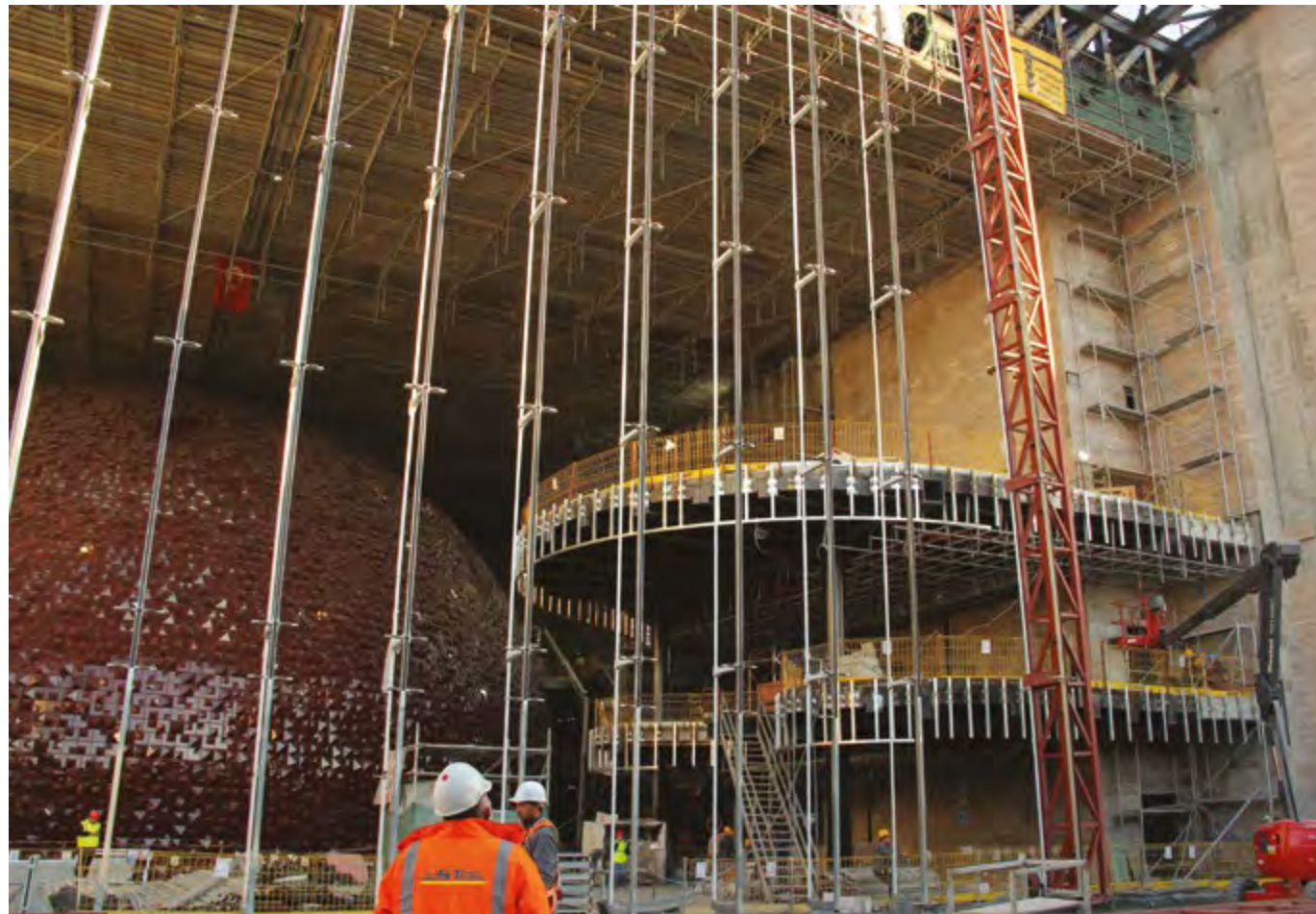
With production lines that fulfill all the requirements of the ISO 9001:2015 Quality Management System and welding applications made in accordance with the TS EN ISO 3834-2 "Quality Requirements for Fusion Welding of Metallic Materials" and EN 1090 "Conformity of Factory Production Control Certificate" standards under the ISO 9001:2015 Quality Management System standard, Justeel is a brand that is preferred not just because of its quality manufacturing but also its understanding of international service.



Assembly

Justeel set out with the aim of becoming the new face of stainless steel in architecture and it has advanced on this journey by applying the same product quality to assembly, and has developed systems that can be easily assembled anywhere in the world, in addition to its European-standard production.

Justeel also provides assembly services in line with project requirements and carries out all field applications meticulously with its experienced and trained assembly teams.



To Reflect Nature

**Is to See the Invisible and
Design Perfection**



Point-Fixing Facade And Glass Connector Systems



AISI 304 or 316 quality stainless steel point fixing routels are systems that allow glass facades, skylights, canopies, separators, and balustrades to be applied in projects where maximum transparency is required by combining single or double glazing of different thicknesses.

Produced to accommodate different thicknesses and combinations of glass such as single glazing, double glazing and laminated glazing, routels are produced ranging from 4 mm to 49.52 mm

FR Routel



Flat Cap Routel



Flat Cap Routel For Installation From The Outside



Flat Cap Routel For Insulated Glass



Flat Cap Routel For Insulated Glass And Installation From The Outside

CR Routel



Countersunk Routel



Countersunk Routel Installation From The Outside



Countersunk Routel For Insulated Glass



Countersunk Routel For Insulated Glass And Installation From The Outside



Spider arms and connectors are produced using AISI 304, 316 quality stainless steel with St37.2 quality steel bodies. When the St.37.2 quality steel body is preferred, it is applied painted in the desired RAL code. Spider arms are produced in 8 mm, 10 mm, 12 mm, 15 mm thicknesses in accordance with static requirements.

SA Spider



Spider With 4 Arms



Spider With 3 Arms



90° Spider With 2 Arms



180° Spider With 2 Arms



Spider With 1 Arms

SB Spider



Spider With 4 Arms



Spider With 3 Arms



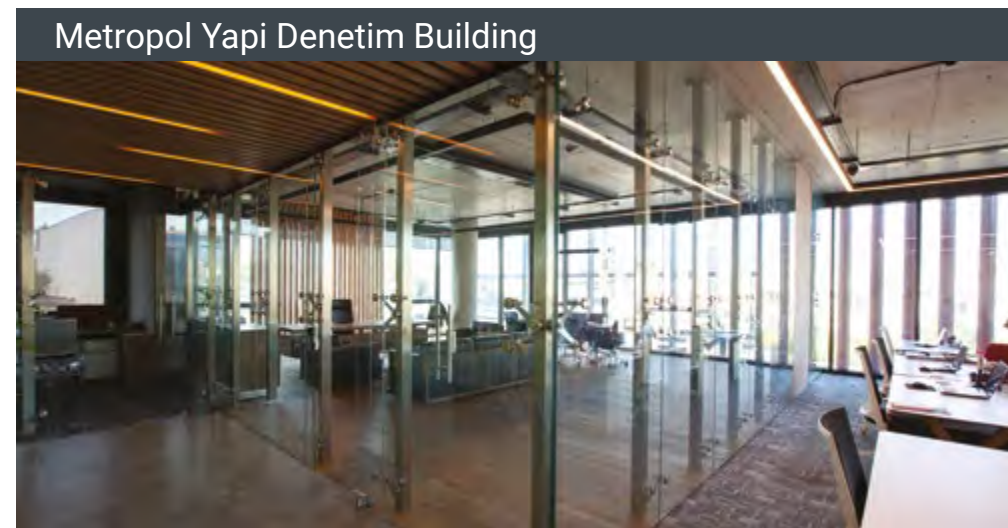
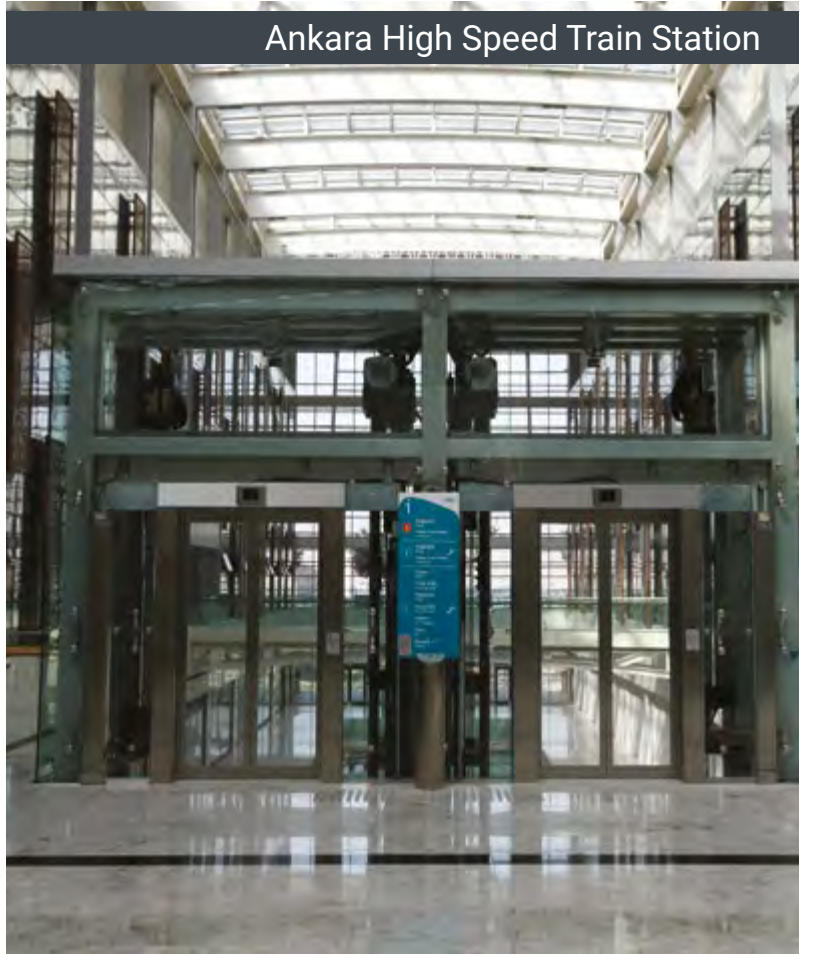
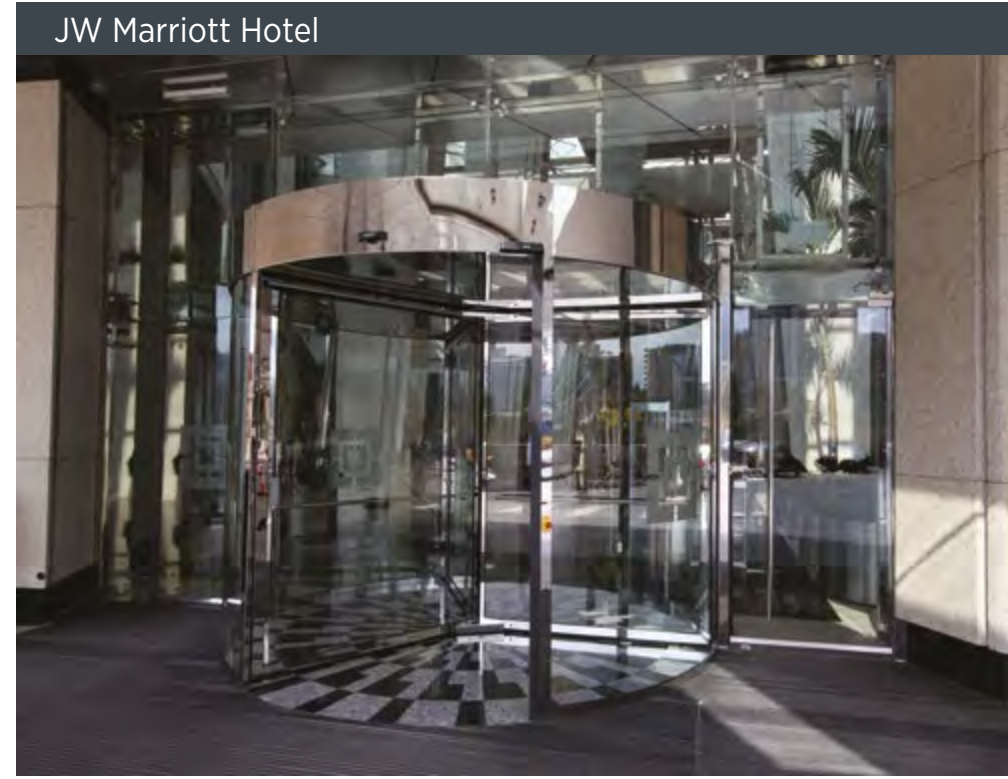
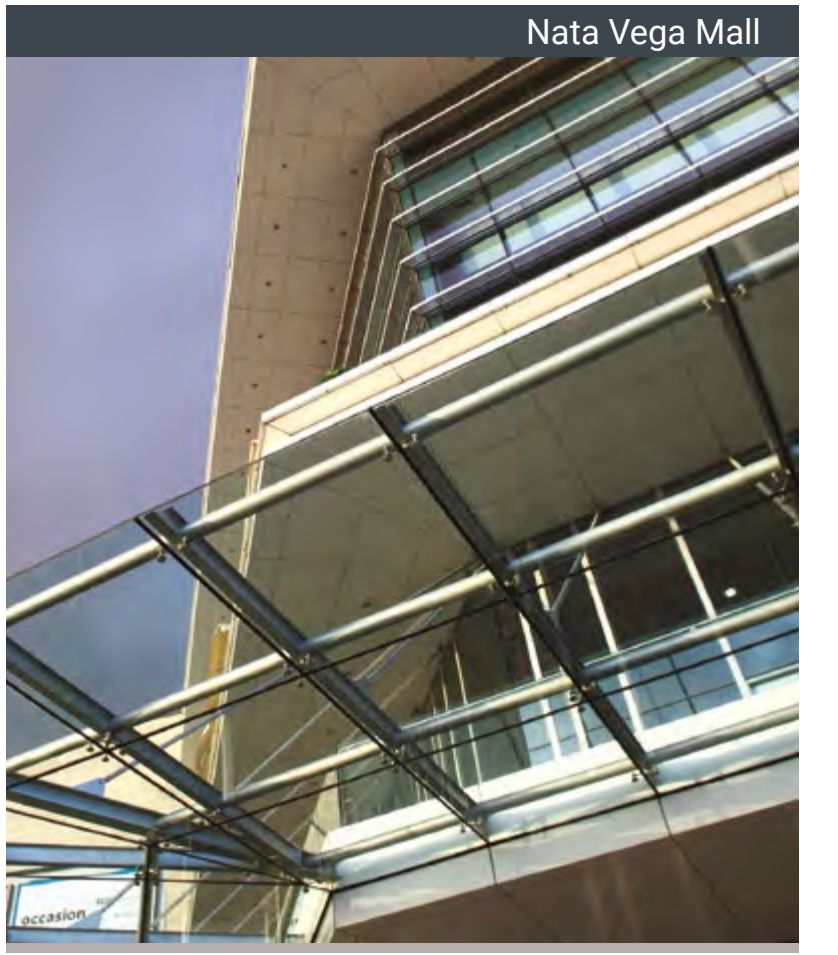
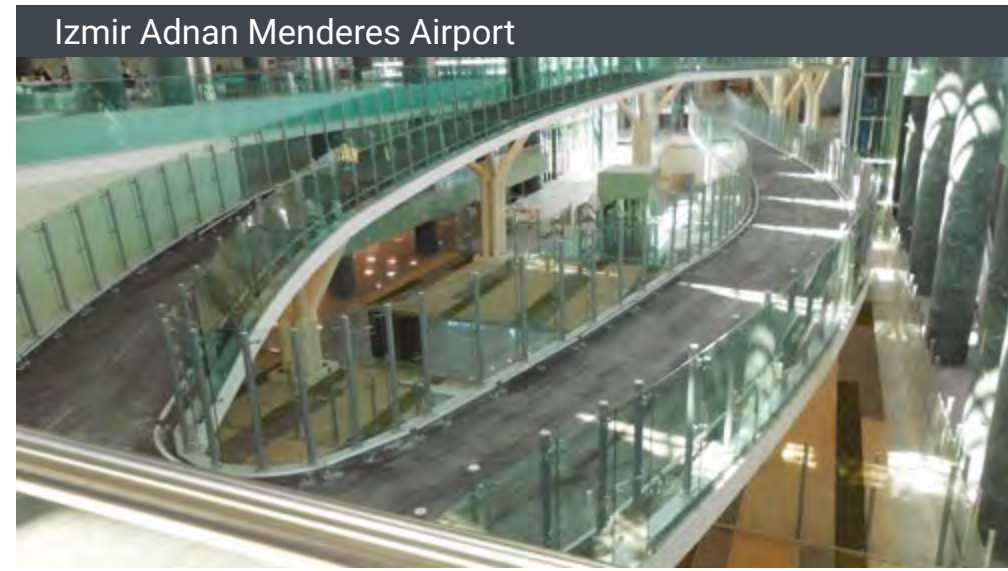
90° Spider With 2 Arms



180° Spider With 2 Arms



Spider With 1 Arms





Glass point fixings are produced using AISI 304, 316 quality stainless steel with St37.2 quality steel bodies. When the St.37.2 quality steel body is preferred, it is applied painted in the desired RAL code.

Glass point fixings can be applied to glazing ranging from 4 mm to 49.52 mm and are produced in different diameters and thicknesses.

Glass Point Fixing



Flat Head Fixed Glass Holder



Fixed Glass Holder With Countersunk Head



Flat Cap Glass Connectors



Countersunk Glass Connectors



Flat Cap Glass Point Fixing



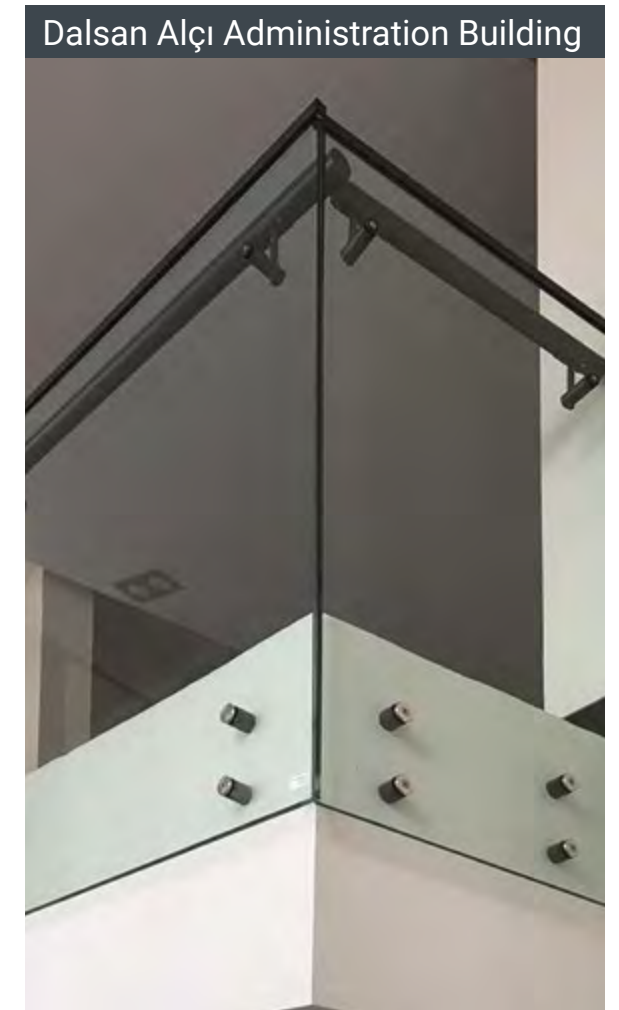
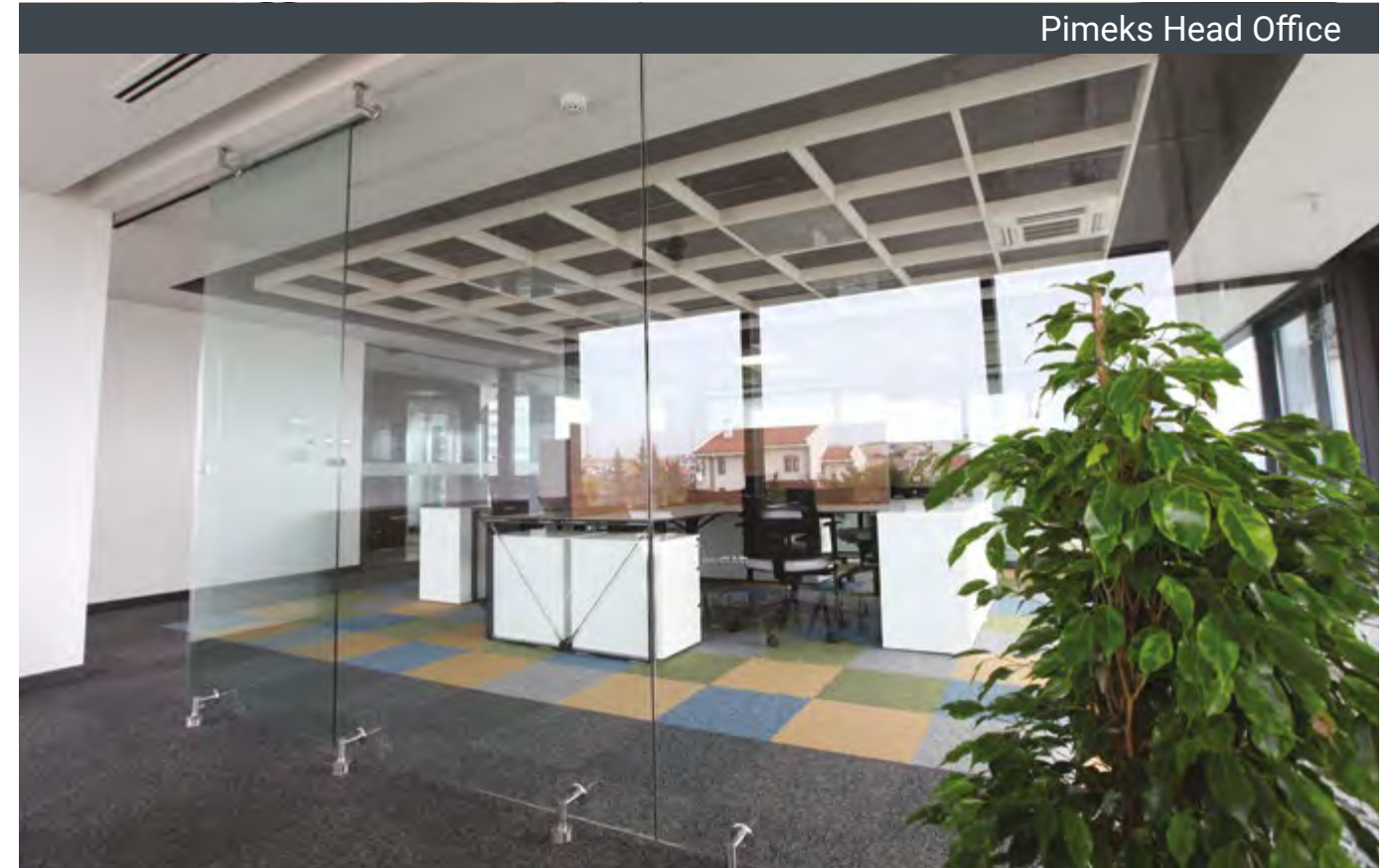
Countersunk Head Point Fixing



Flat Head Fixed Of Handrail



Flat Head Hinged Glass Fixed





Canopy plates and accessories are produced using AISI 304, 316 quality stainless steel with St37.2 quality steel bodies.

When the 37.2 quality steel body is preferred, it is applied painted in the desired RAL code. Canopy plates are produced with different design options such as pipes or wire rope tensioners in desired thicknesses specific to the project.

Canopy



Straight Canopy Carrier Arm



Conical Canopy Carrier Arm



Oblique Canopy Carrier Arm



Canopy System



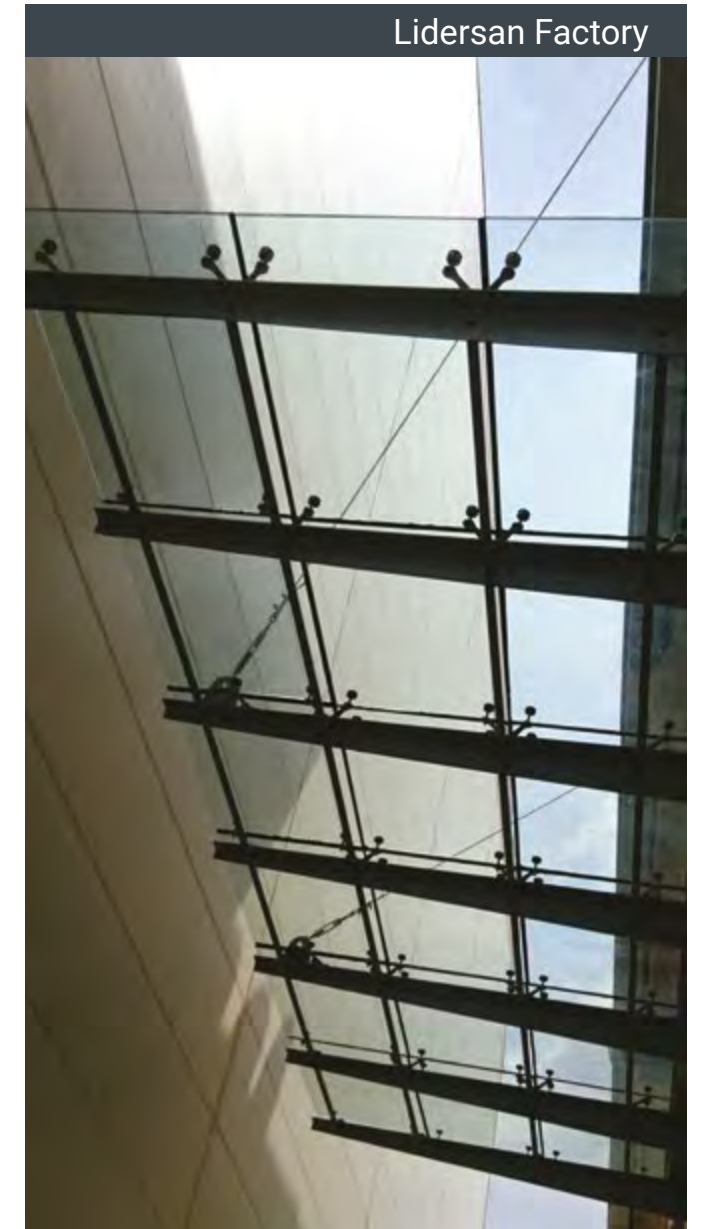
Tension Rod Point Fixed Canopy



Antares Mall



UBM Office Building

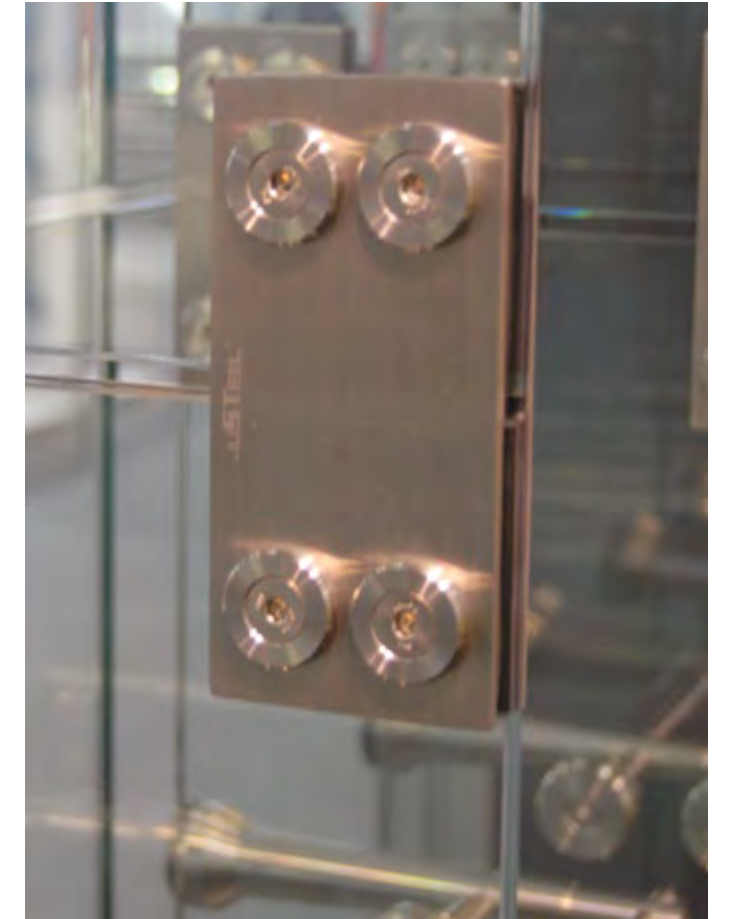


Liderson Factory



The most important feature that distinguishes the glass column routel system from other facade systems is that its carriers are glass. This provides a completely transparent facade appearance.

In projects where design and assembly services are requested from the Justeel team, the glass facade and column statics and the products and fabricated parts required by these static calculations are made by Justeel's experienced staff and the project including assembly is completed.



Glass Connector And Modular Fixing Accessorys



Fin Glass Spider With 1 Arm



Fin Glass Spider With 2 Arm



Glass Column Connection



Ground-Ceiling-Column Connection

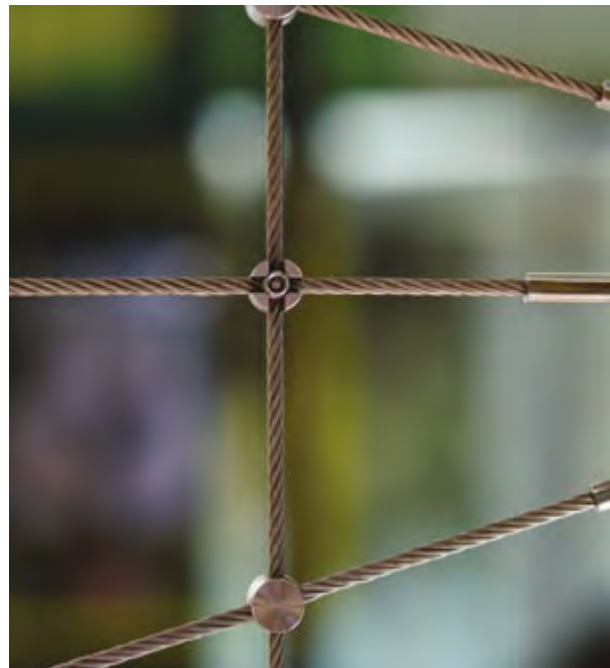


Glass Column Connection



To Reflect Nature
Is to Aim for the Best and Exceed Limits

Architectural Steel Wire Rope And Accessories



Architectural steep wire rope accessories possessing AISIS 304, 316 quality stainless steel or St37.2 quality steel bodies are produced with the Justeel signature as a part of the architectural designs.

Providing design and application services for custom-design architectural wire rope applications, Justeel, introduces solution proposals to different projects with its standard group products comprising anchor elements, wire ropes external & internal threads, adaptors, rope clamps, swage balls, turnbuckle pieces, carrier arms, meshes and connector accessories.

Anchor

Anchors are produced with steel bodies made using AISI 304, 316 quality stainless steel or St37.2 quality steel in sizes and thicknesses to match the static requirements of the project.



Multiple Anchor



Radial Single Anchor



Corner Anchor



Radial Dublex Anchor



Single Radial Single Anchor

Wire Rope

It is generally produced in AISI 304 and 316 quality stainless steel in diameters of 6 mm, 8 mm, 10 mm, 12 mm, 14 mm.



Wire Rope



Assembly of Wire Rope

External & Internal Threads

These are produced with steel bodies made using AISI 304, 316 quality stainless steel in sizes and thicknesses to match the static requirements of the project.



External Threads



Internal Threads

Stoppers

These are produced with steel bodies made using AISI 304, 316 quality stainless steel in sizes and thicknesses to match the static requirements of the project.



Flat Cap Stopper



Countersunk Head Stopper

End Fitting



Internal Double Connection



External Double Connection



Conical Internal Double Connection



Conical External Double Connection



Internal Connection



External Connection



Küresel Başlı Halat Terminalleri

These are generally produced in AISI 304 and 316 quality stainless steel in diameters of 4 mm, 6 mm, 8 mm, 10 mm, 12 mm, 14 mm.



Ball with Through Hole



Ball with Pochet Hole



Ball With Threaded Through Hole

Rope Clamps

These are generally produced in AISI 304 and 316 quality stainless steel in diameters of 4 mm, 6 mm, 8 mm, 10 mm, 12 mm, 14 mm, 16 mm. Alternative solutions are developed for applications in different diameters, together with our standard products, according to static requirements.



0-90° Adjustable Rope Clamp With Internal Thread



Light Clamp Ring



Clamp Ring



90° Adjustable Rope Clamp



Adjustable Double Rope Clamp



Adjustable Triple Rope Clamp



Square Clamp



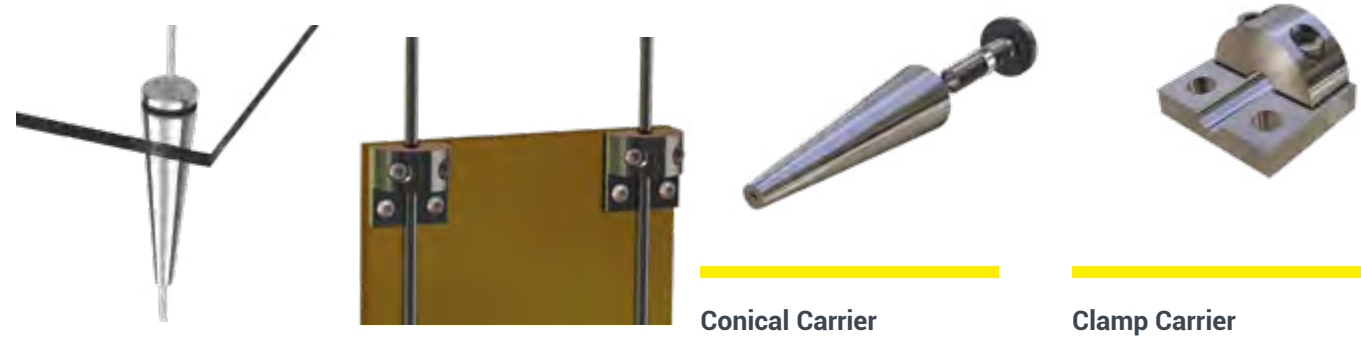
Middle Turnbuckle Piece

It is generally produced in AISI 304 and 316 quality stainless steel in diameters of 4 mm, 6 mm, 8 mm, 10 mm, 12 mm, 14 mm, 16 mm. Alternative solutions are developed for applications in different diameters, together with our standard products, according to static requirements



Carriers

These are generally produced in AISI 304 and 316 quality stainless steel. Alternative solutions are developed for applications in different diameters, together with our standard products, according to static requirements.

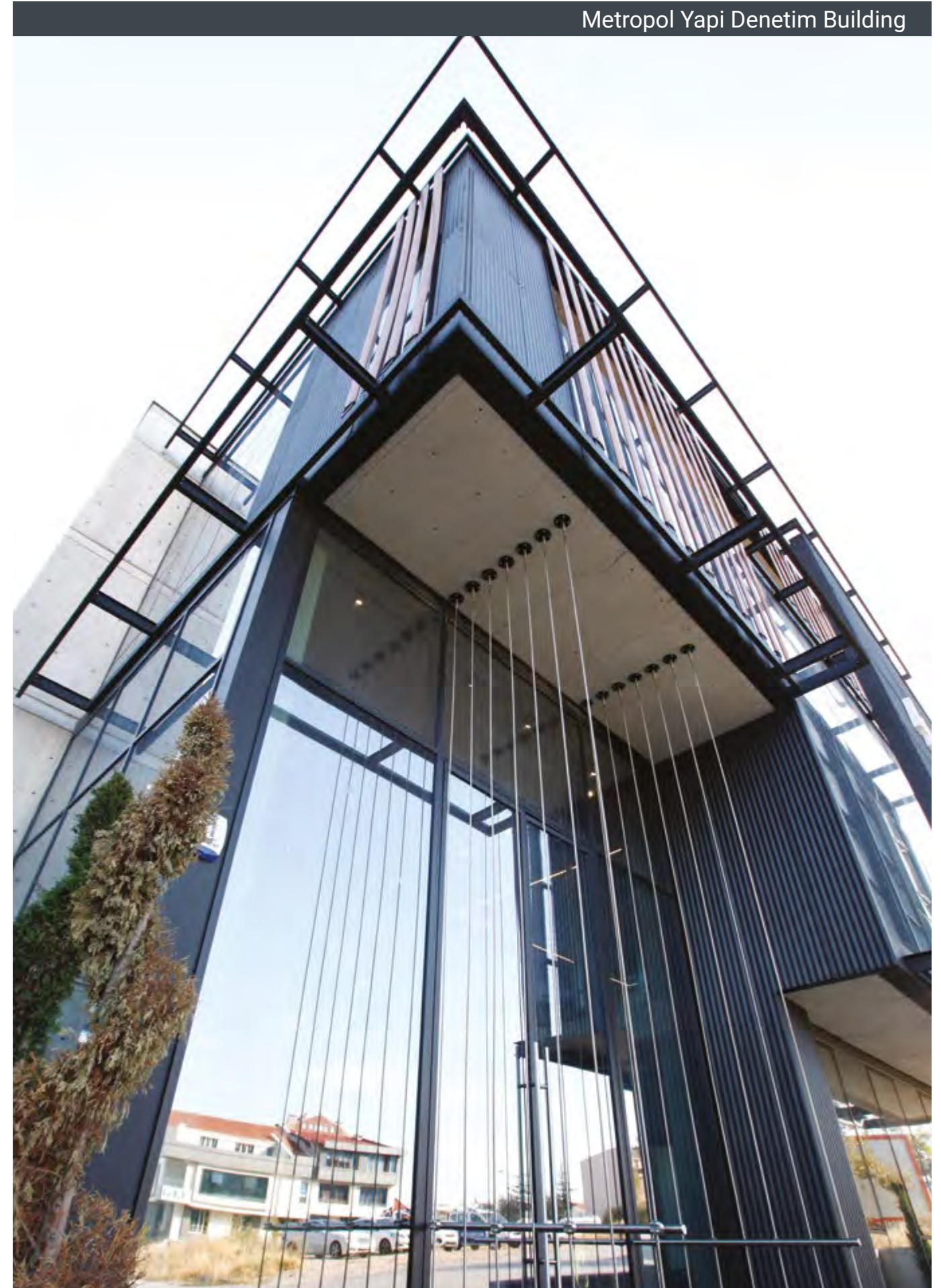


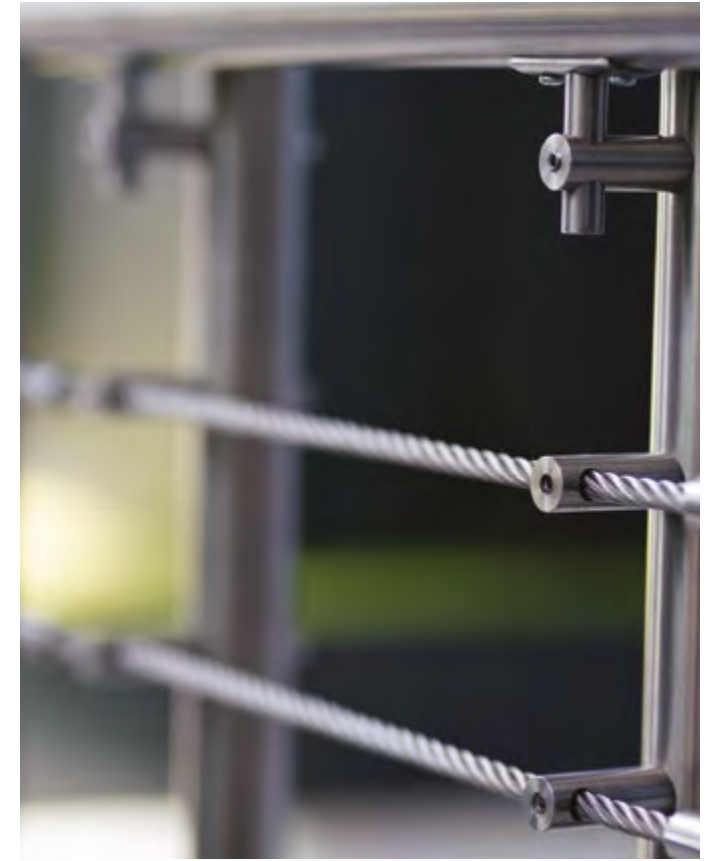
Stainless Steel And Steel Mesh

Steel mesh products, which provide an aesthetic appearance to architectural designs and also meet high security requirements, are produced in AISI 304, 316 quality stainless steel or in galvanized and painted steel in accordance with architectural demands.



Metropol Yapi Denetim Building





Door Accessories

Door handles that provide aesthetic touches to the doors selected to fit the location are produced using AISI 304, 316 quality stainless steel or St37.2 quality steel body painted in the desired RAL color. Justeel door handles, which are frequently preferred for aluminum, steel, and glass doors, are made in custom designs according to the architect's demands in addition to the standard product group.

Not only does Justeel produce and deliver door handles in accordance with customer demands, it also provided architects and users with finished product support in the production of steel, stainless steel, and aluminum doors made by the group's companies.



Linear

Linear

Metro

Degree



Circular



Miter



Octagon



Freya



Vulcan



Edge

Custom Size and Design Door Handles

Custom designed door handles in different forms and sizes to meet architectural project expectations manufactures.

Hinge

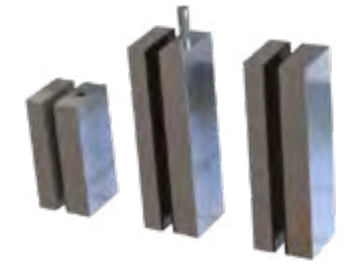
Justeel manufactures stainless steel glass door hinges in different shapes and sizes as custom designs to meet the expectations of architectural projects.



Rectangle Hinge



Conical Hinge



Rectangle Hinge

Sliding System

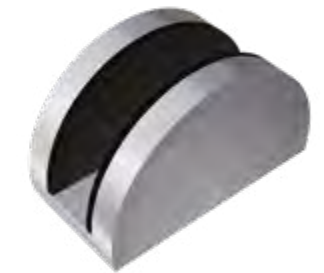
Sliding systems that can be made without a frame by using accessories for sliding systems with point fixings are produced with bodies made of AISI 304, 316 quality stainless steel.



Wall Connection

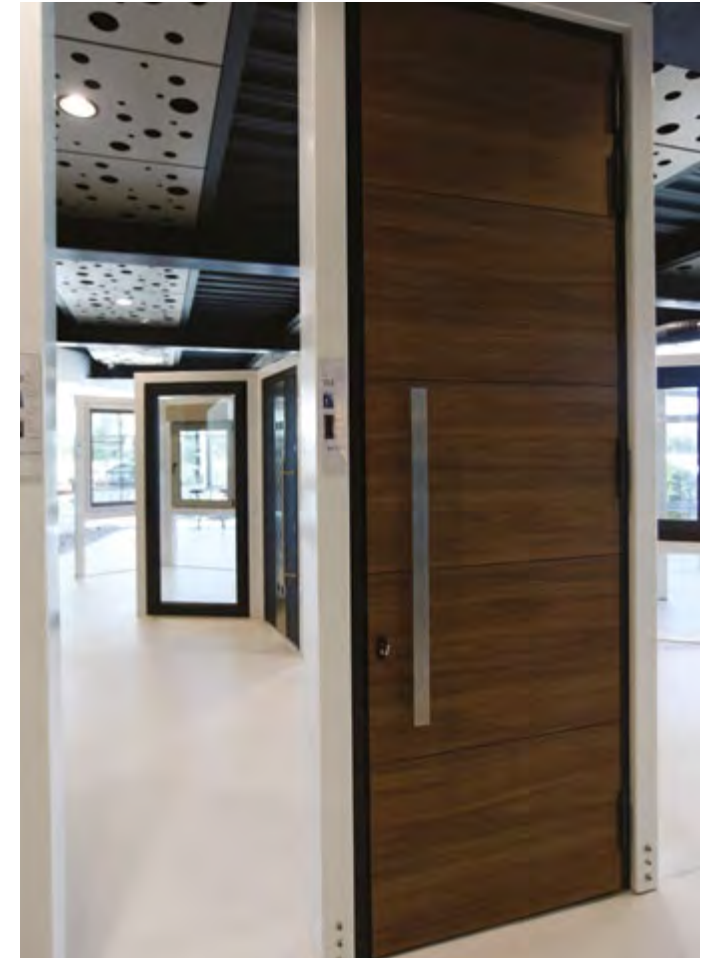


Stopper



Ground Connection





To Reflect Nature
**Is to Think Outside the Box and
Manufacture Perfection**

Sharp Edge Steel Facade Profiles



Sharp Edge Steel Facade Profiles

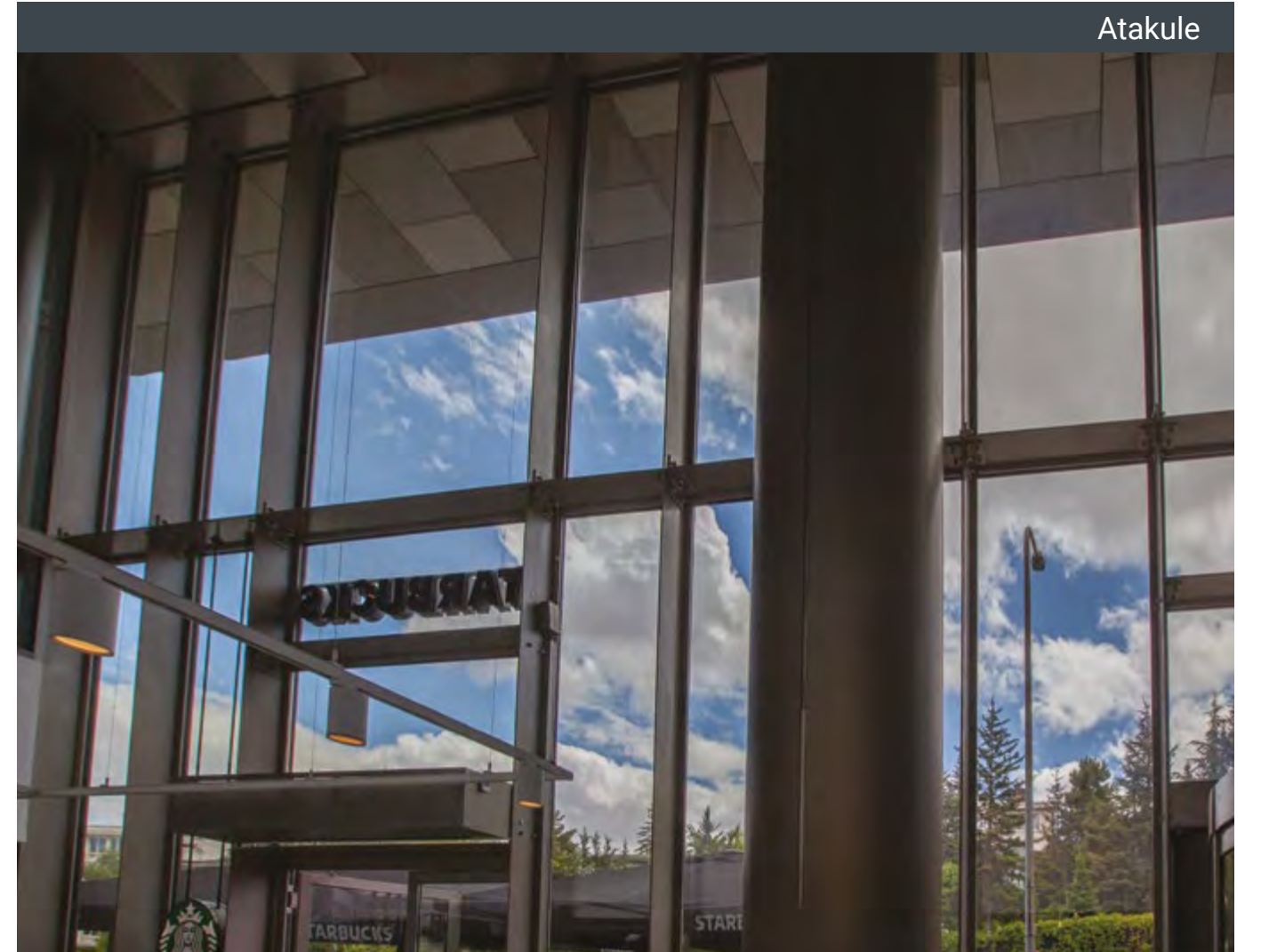
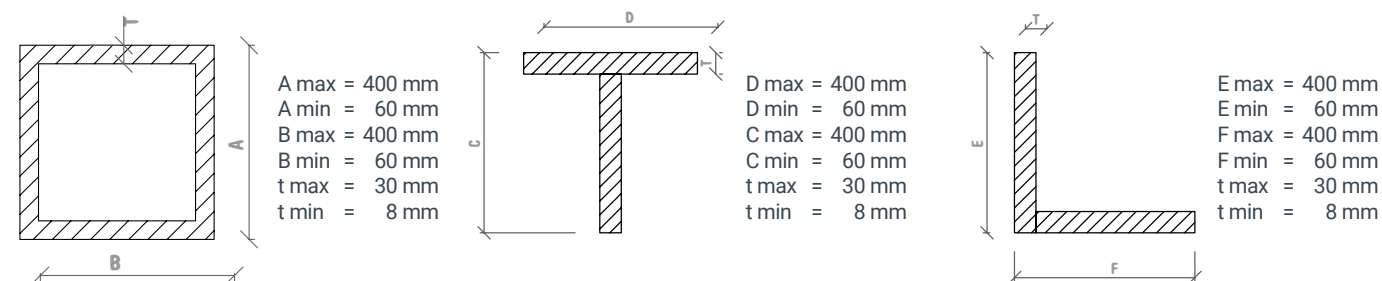
Sharp edge steel profiles are designed to make steel sections smaller and thinner while meeting the static requirements in facade applications, and to make facades with the most esthetic profiles when doing this. Sharp edge steel facade profiles are used in many areas from facade systems, skylights, and canopies to interior architecture and furniture design, and Justeel offers architects a product group that meets the expectations of projects possessing thinner, minimalist lines.

Sharp edge steel profiles, which can be made in project-specific dimensions and forms, are produced with structural carbon steel and stainless steel options in the Justeel factory with machinery specially developed for these products.

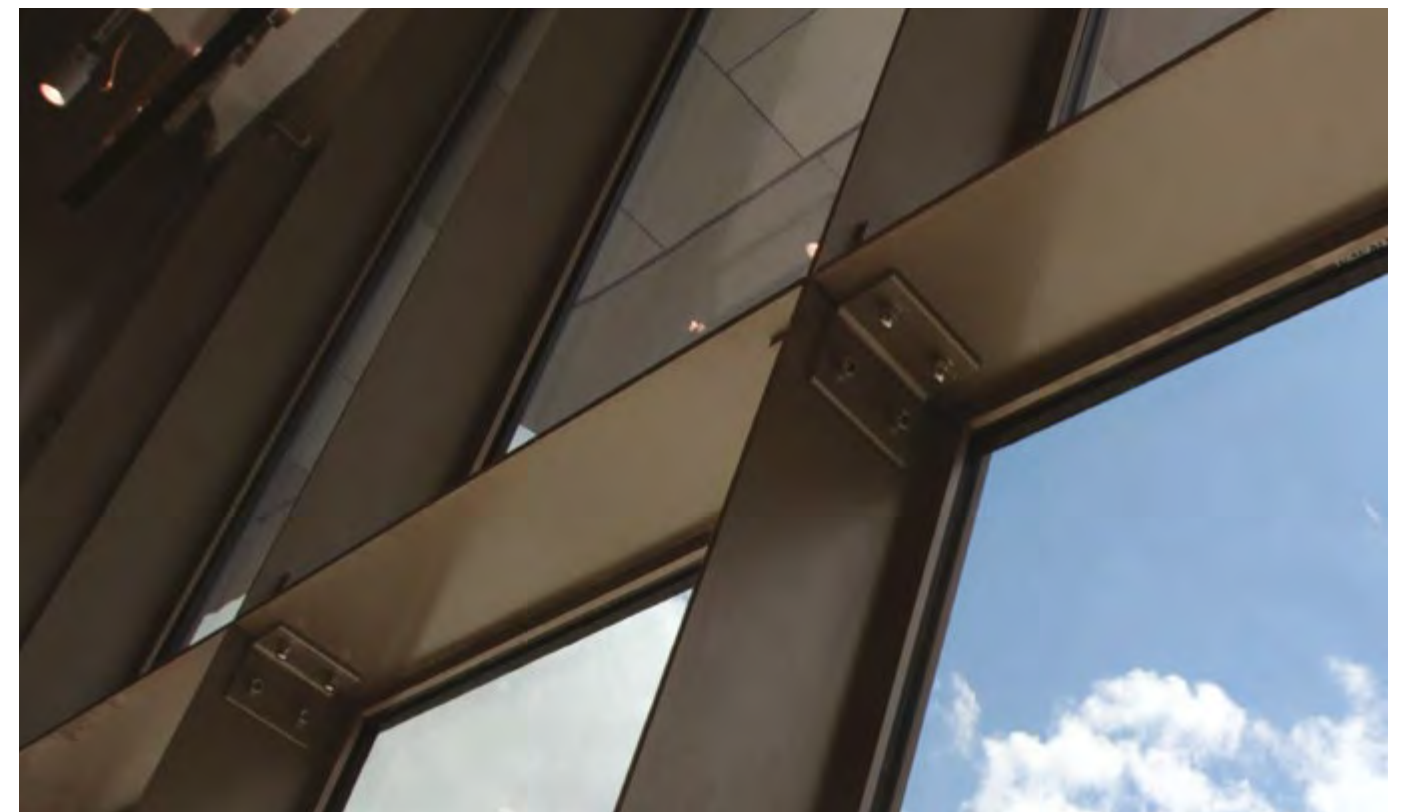
Square and Rectangular Sections L and T Shaped Sections Custom Formed Sections

Producible Section Size Limits:
 Min. H:60*120 mm, t:8 mm
 Max. H:400*400 mm, t:30 mm
 L Max:12000 mm, L min:2000 mm

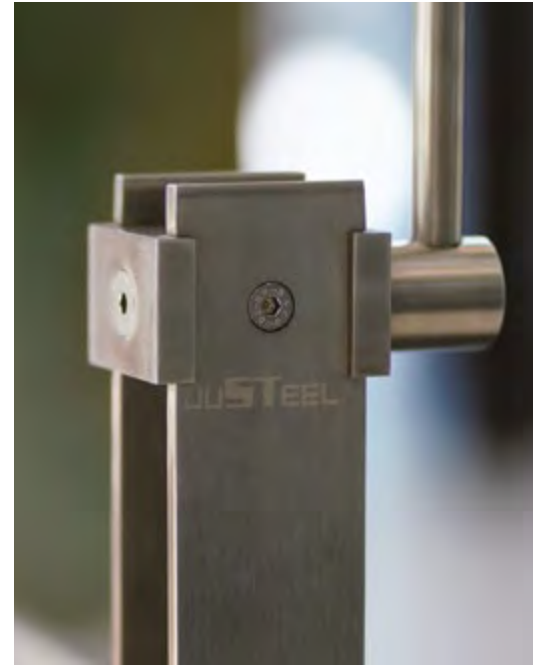
Available materials:
 Structural Carbon Steels (St37.2, St52.)
 Stainless Steel (AISI 304-316, Duplex.)



Atakule

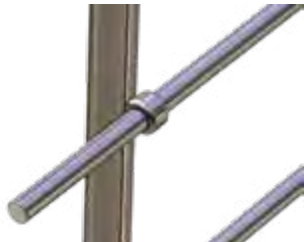


To Reflect Nature
Is to Discover All of Life's Connections



Metal Balustrade

Railing systems designed with round, square, and rectangular pipe or bar materials specific to the project are produced in aluminum as well as stainless steel and painted steel options. There are unlimited size options available to meet static requirements in balustrades that can be mounted on the floor or the facade.



Steel Based Glass Balustrade

In glass balustrade with steel base systems are usually made with hot-dip galvanized steel since the base part is either embedded or coated with another material. Individual or continuous base is used depending on the project's static requirements.

In the details where the base is not embedded, the carrier base is coated with specially bent stainless steel, painted steel, or aluminum plate, depending on architectural preference. In glass balustrades with steel base, balustrade handrails can be made with pipe, box, or glass channel pipe profiles, as U-bend sheet metal or wooden handrails, depending on choice.



Galvanized Steel Base (Lateral Assembly)

Galvanized Steel Base (Ground Assembly)

Galvanized Steel Base Assembly



Glass Balustrade With Steel Strut

In addition to the AISI 304, 316 quality stainless steel or St37.2 quality painted steel strut options, glass balustrades with steel struts can also be made with pipe, box, glass channel pipe profiles, U-bend steel, or wooden handrail options, depending on choice. Struts can be applied in the form of single or double bars, and can also be produced at desired angles.



Glass Balustrade With Steel Strut



Glass Balustrade For Steel Strut With Point Fixing



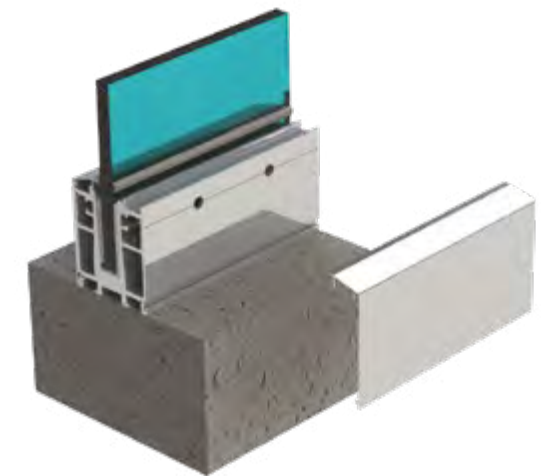
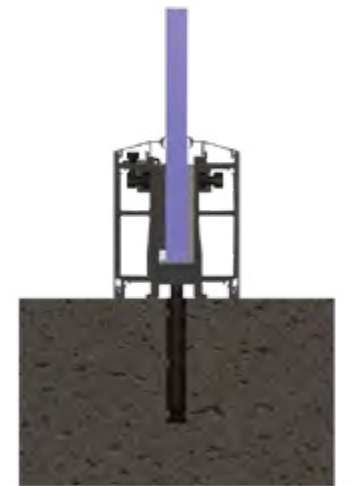
Glass Balustrade With Point Fixing

AISI 304, 316 quality stainless steel or St37.2 quality galvanized or painted steel point fixings applied with single glazing or laminated glazing options in accordance with static requirements, provide an esthetic and simple solution for projects that require wall mounting that does not block the view. In glass balustrades with point fixings, balustrade handrails can be made with pipe, box, or glass channel pipe profiles, as U-bend sheet metal or wooden handrails depending on choice.



Aluminum Base Glass Balustrade

In aluminum base glass balustrade systems, individual or continuous base is used depending on the project's static requirements, and the base is either mounted on the finished floor or embedded in the floor. Bases are coated with aluminum base closing profiles painted in the desired RAL color. The selected glass combination is determined as a result of static calculations and the balustrade handrails can be made with pipe, box, or glass channel pipe profiles, as U-bend sheet metal or wooden handrails, depending on choice.





Glass Balustrade With Side Clamps

Glass balustrades with side clamps are available with single or laminated glass options meeting static requirements and are balustrade systems in which the glass is carried by side clamps attached to vertical posts. Handrails made from curved sheet steel or pipes can be fitted atop the glass and custom design solutions can be developed in line with architectural preferences.



Glass Clamps

Made from steel, stainless steel, or aluminum, the clamp of glass system is made according to the desired combination of glazing. It is produced in different sizes and with different features and designs.



Perforated Sheet Balustrade

Perforated sheets prepared with 304,316 quality stainless steel, St37.2 quality painted steel, and aluminum sheet options meeting static requirements are produced according to the structure of the location. 304,316 quality stainless steel and St37.2 quality painted steel post options are available.

It provides an esthetic and simple solution that does not block the view in projects where a front connection design is required in perforated sheet balustrades. Perforated sheet balustrades may be used both indoors and outdoors. Balustrade handrails can be made as pipes, boxes, or wooden handrails, depending on preference.





Mesh Balustrade

Mesh balustrades can be designed with 304/316 quality stainless steel and St37.2 quality painted steel options meeting static requirements and are produced according to the structure of the location and the project. In balustrades that can be prepared with 304/316 quality stainless steel and St37.2 quality painted steel mesh options, it provides an esthetic and simple solution that does not block the view for the projects that require a front connection design. Mesh balustrades can be used both indoors and outdoors. Balustrade handrails can be made as pipes, boxes, or wooden handrails, depending on preference.



Wire Rope Tensioned Balustrade

Wire rope-tensioned balustrades are prepared with 304-316 quality stainless steel and St37.2 quality painted steel options meeting static requirements and are produced according to the structure of the locations and the project, with the option of 304/316 quality stainless steel wire rope in various set diameters. In wire-tensioned balustrades, it provides an esthetic and simple solution that does not block the view for the projects that require a front connection design.

Balustrades can be used both indoors and outdoors. Balustrade handrails can be made as pipes, boxes, or wooden handrails, depending on preference.



REFERENCE

PROJECTS



POINT-FIXING FACADE AND GLASS CONNECTOR SYSTEMS



ARCHITECTURAL STEEL WIRE ROPE AND ACCESSORIES



SHARP EDGE STEEL FACADE PROFILES

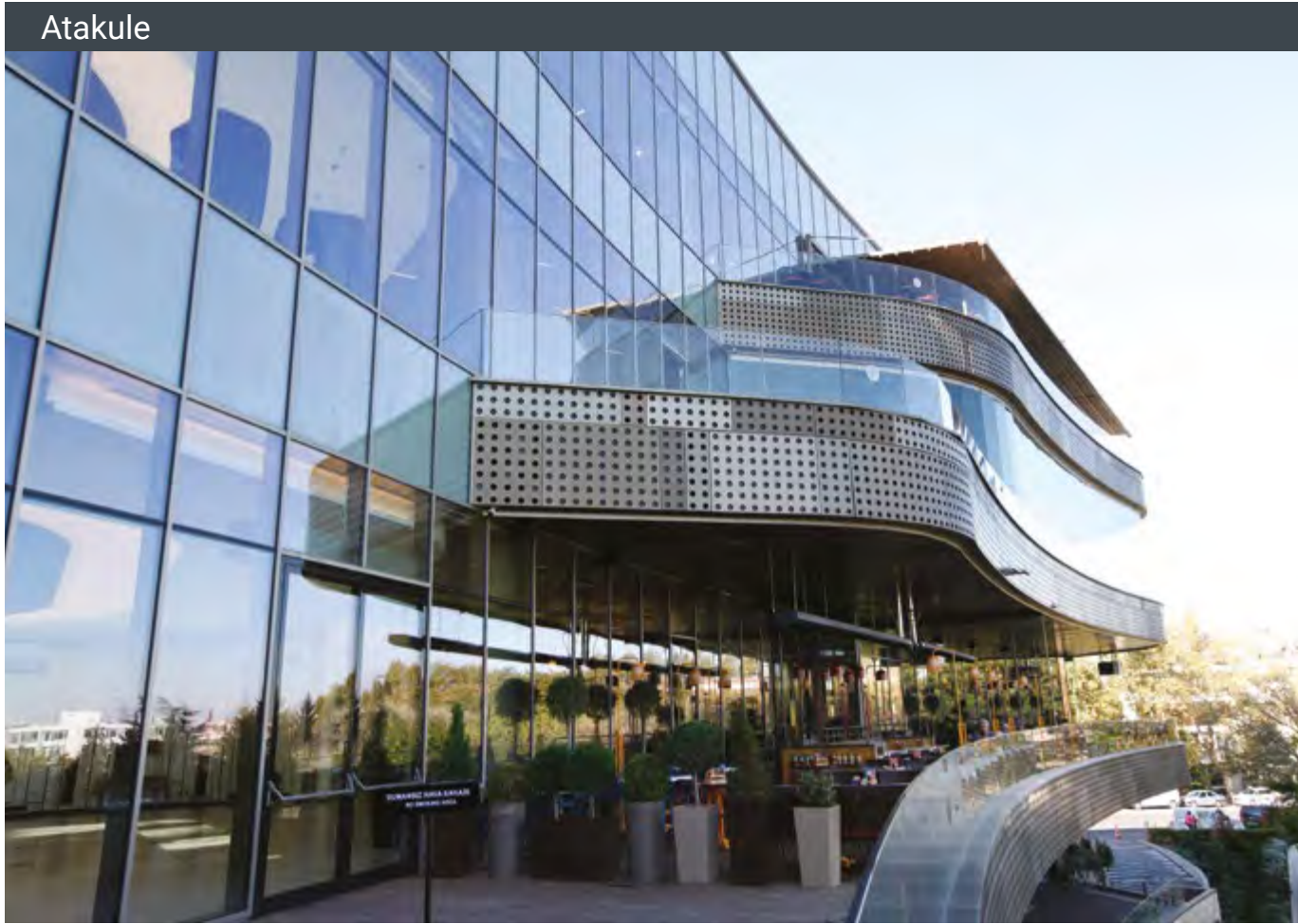


BALUSTRADE PROFILE AND ACCESSORIES

Atatürk Cultural Center



Atakule



Adnan Menderes Airport



Esenboga Airport



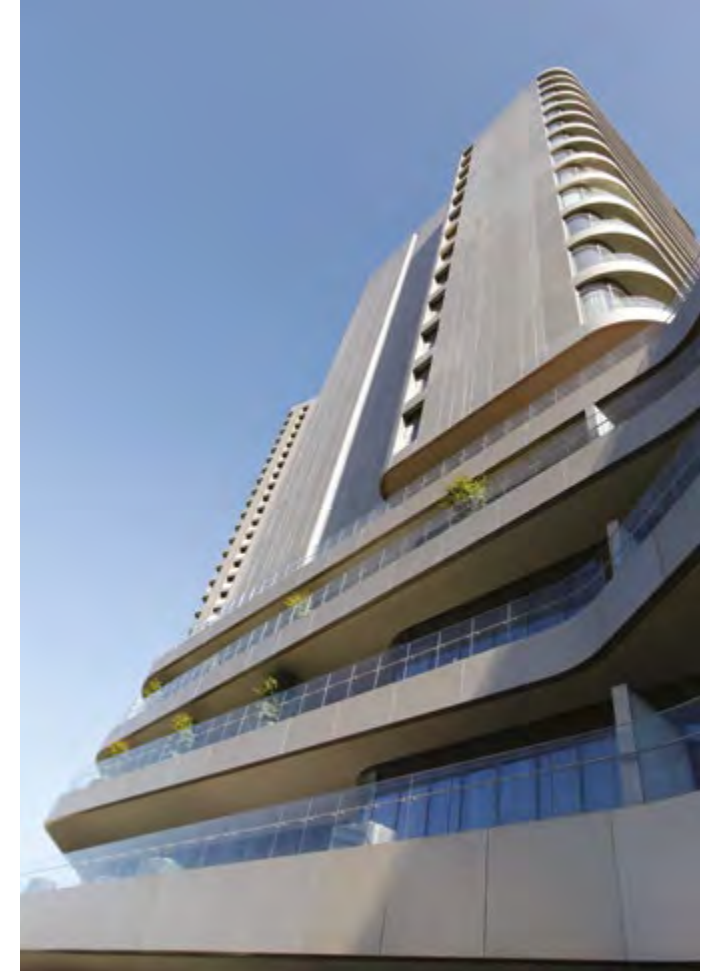
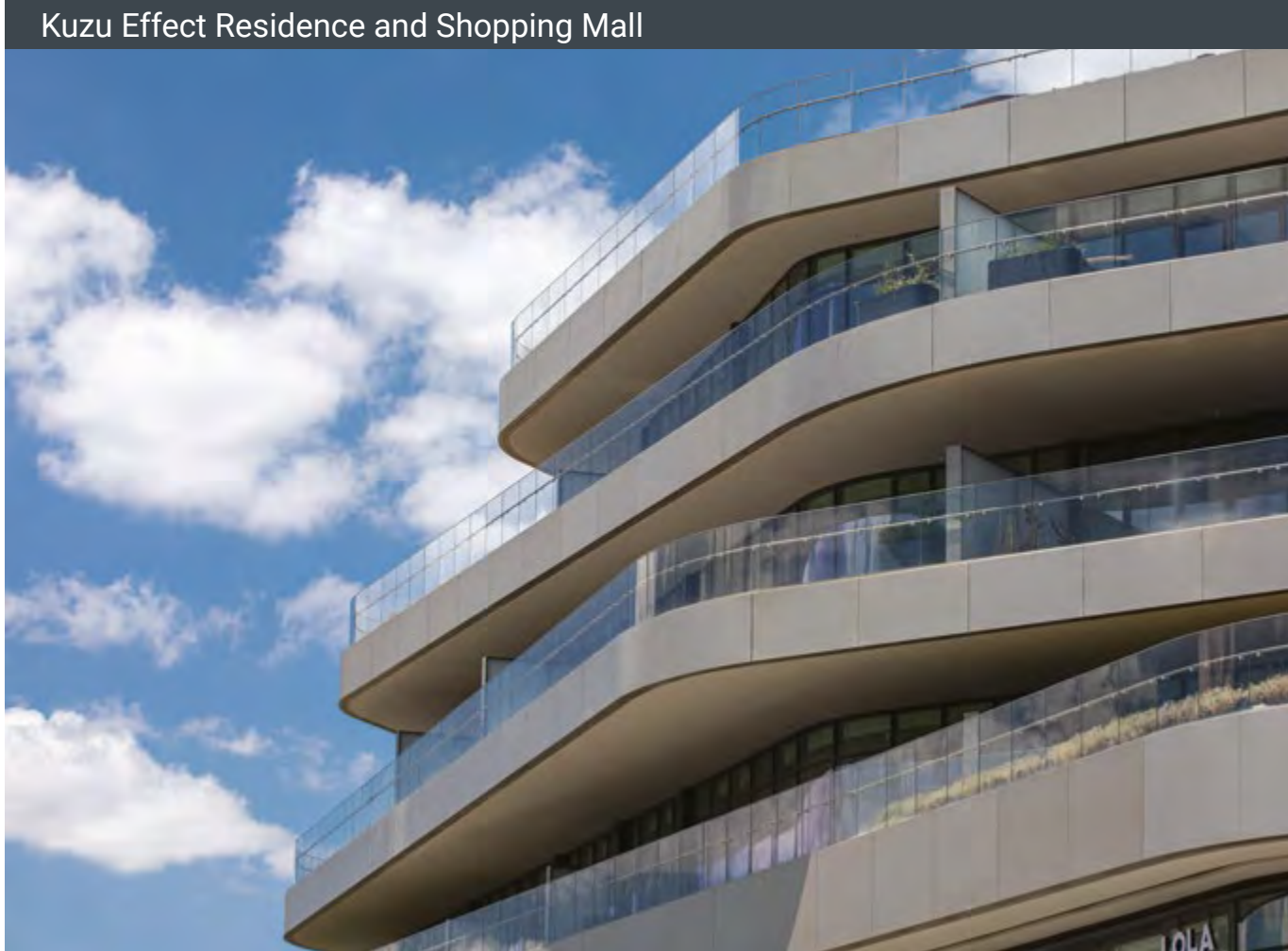
JW Marriott Hotel



Maidan Office



Kuzu Effect Residence and Shopping Mall



High Speed Train Station



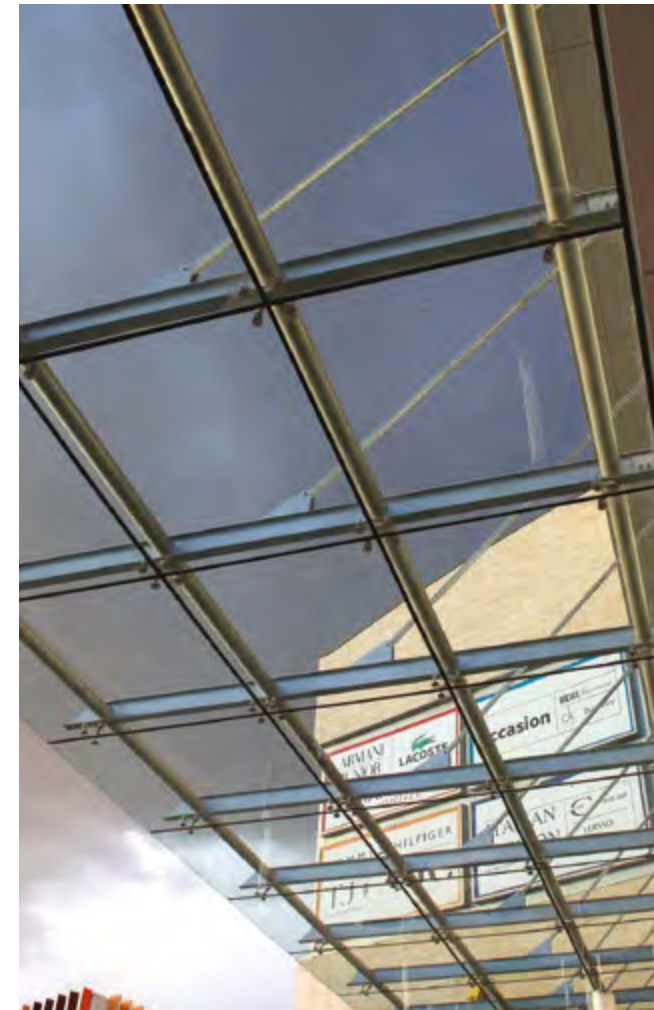
Atlantis City Shopping Mall



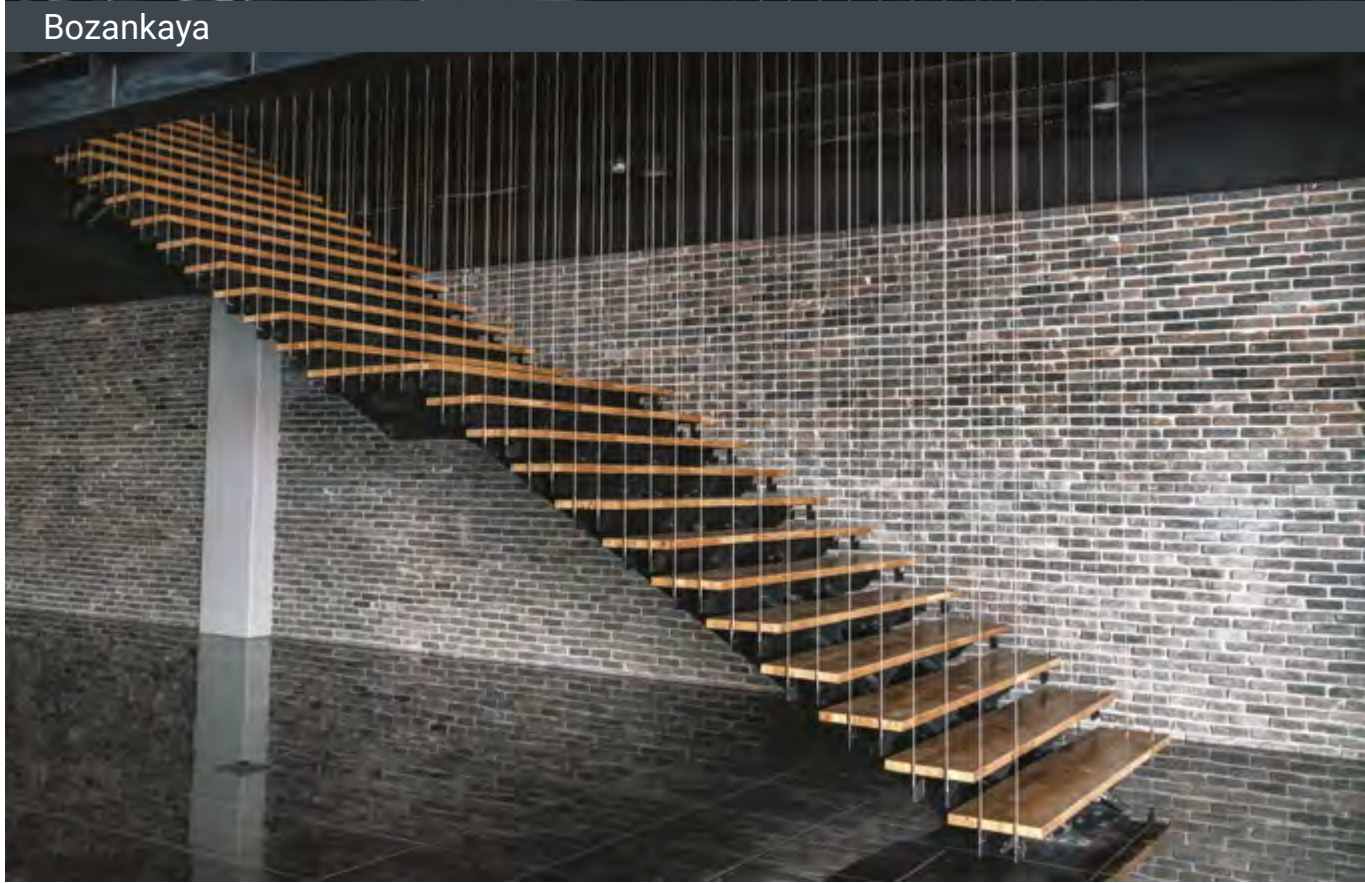
Nata Vega Shopping Mall



Presidential Symphony Orchestra



Bozankaya



Golbasi Hakimevi



Istanbul Hakimevi



German Football Association



German Football Association



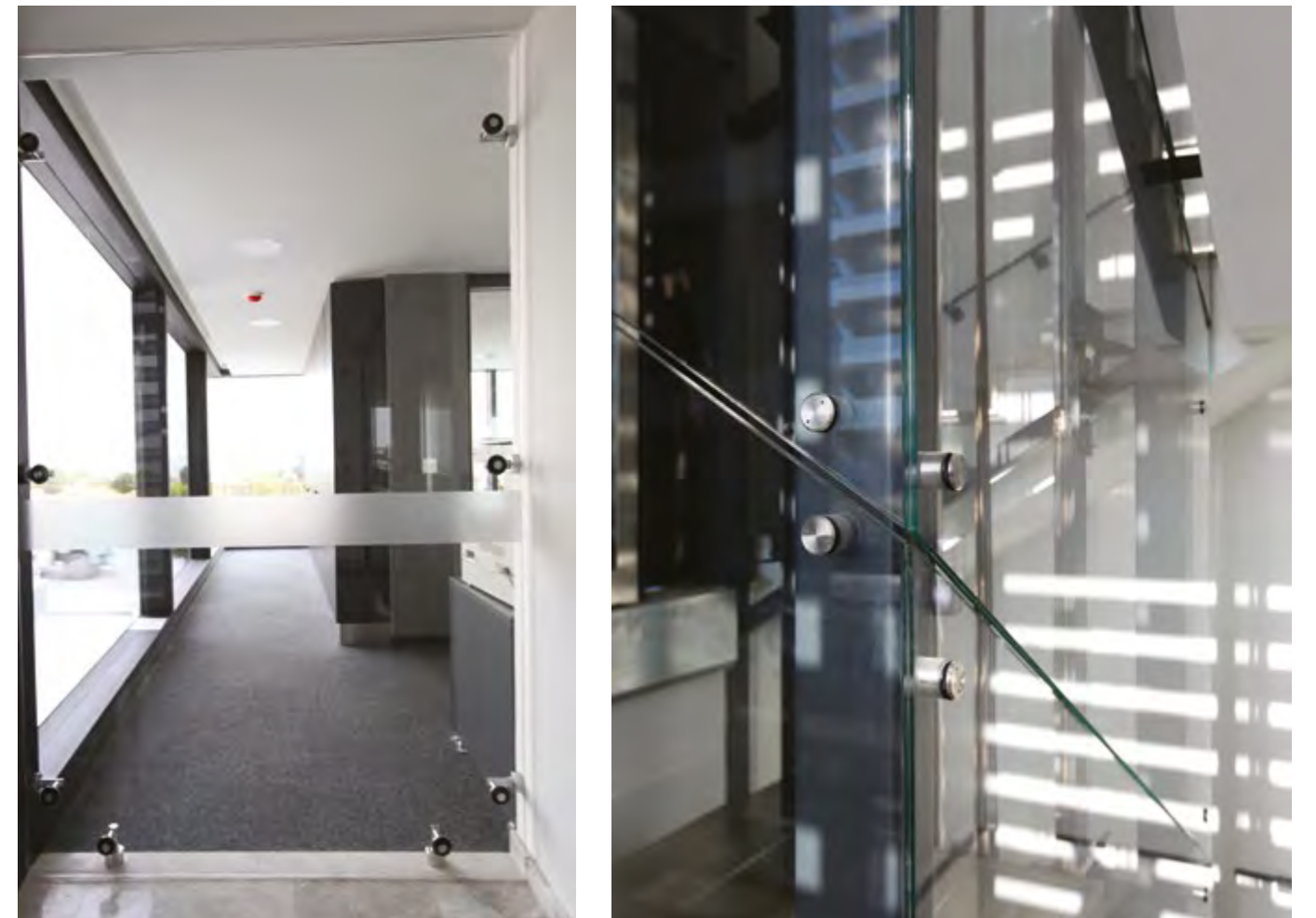
Renaza Life Center



Dormak Administration Building



Pimeks Head Office



Metropol Yapi Denetim Building



Yenigun Head Office



Serintepe Villa



Galataport İstanbul



Ankara Music and Fine Arts University



Head Office & Showroom

Incek Bulvarı No : 98
06805 Çankaya Ankara Turkey
+90 312 441 70 42

Factory & Technology Center

Çubuk Yolu 8 Km. Güldarpi Mahallesi
06760 Esenboğa Ankara Turkey
+90 312 827 21 22

İstanbul Office

+90 212 465 30 82

Frankfurt Office

+49 172 527 70 89

info@justeel.com

justeel@pimeksgmbh.de

